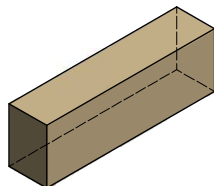
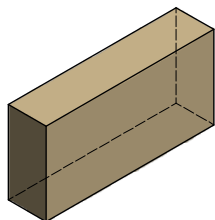


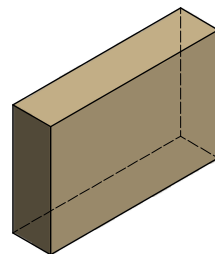
NOTE: STONE HEIGHTS TO CORRESPOND
WITH 225mm x 75mm BRICK MODULES
(6mm JOINTS)



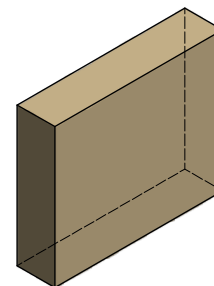
A144 - PLAIN
(‘A144F’ DENOTES FACED BOTH ENDS)
APPROX. 15 kg



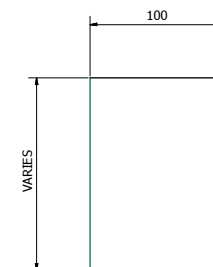
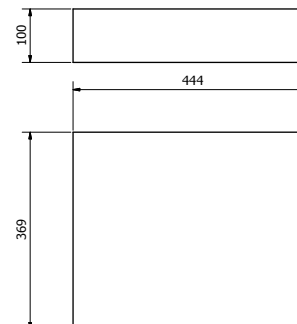
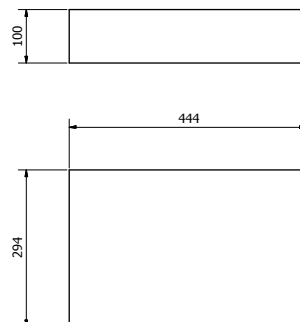
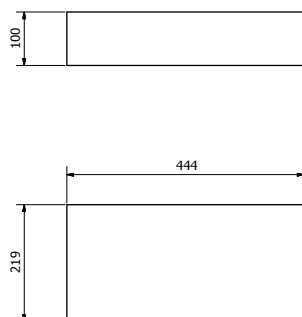
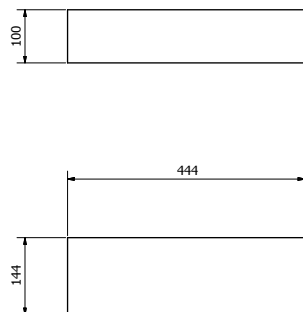
A219 - PLAIN
(‘A219F’ DENOTES FACED BOTH ENDS)
APPROX. 22 kg



A294 - PLAIN
(‘A294F’ DENOTES FACED BOTH ENDS)
APPROX. 30 kg

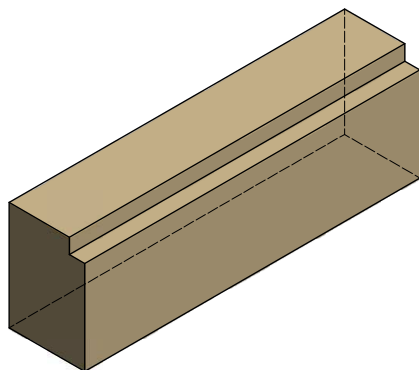


A369 - PLAIN
(‘A369F’ DENOTES FACED BOTH ENDS)
APPROX. 38 kg

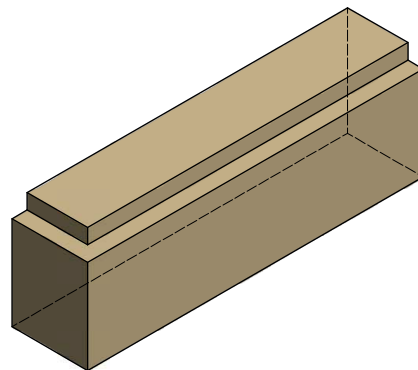


**NOTE: STONE HEIGHTS TO CORRESPOND
WITH 225mm x 75mm BRICK MODULES
(6mm JOINTS)**

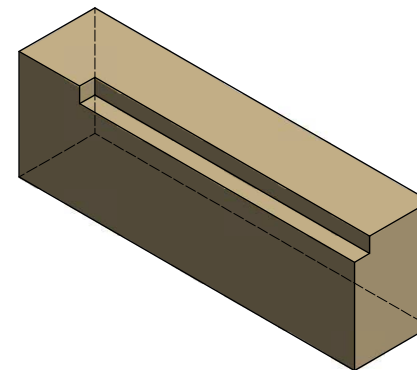
VOBSTER ARCHITECTURAL	
Vobster Architectural Newbury Works Coleford, Radstock Somerset, BA3 5RX T: +44 (0)203 968 7058 E: enquiries@vobsterarchitectural.co.uk W: www.vobsterarchitectural.co.uk	
<small>It is the responsibility of the customer to ensure the suitability of any of these products within their project. Vobster Architectural Ltd. can accept no responsibility for the accuracy or suitability of any information produced and offer no warranty whatsoever in this respect. All units weigh approx. 2.4 tonnes/m² although this will depend on the chosen mix design - please therefore contact us for confirmation of weights. To comply with CEN regulations please notify us if you require lifting sockets to be incorporated into units at time of order.</small>	
KEY	
—	DENOTES FINISHED FACES
→	DENOTES DIRECTION OF WEATHERING
SCALE	1:5 U.S.O.
TITLE	ASHLAR (6mm JOINTS)
Drawing No. VC-ASH06-01 Rev 1	



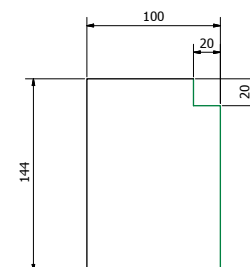
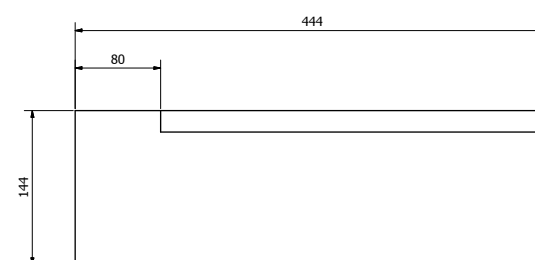
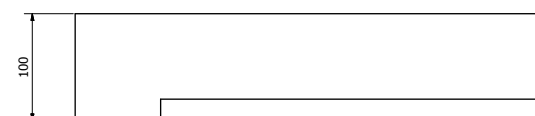
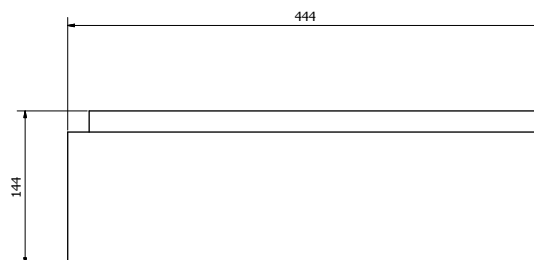
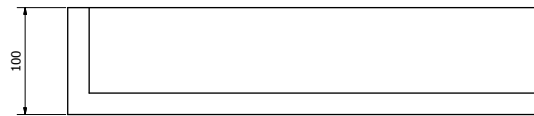
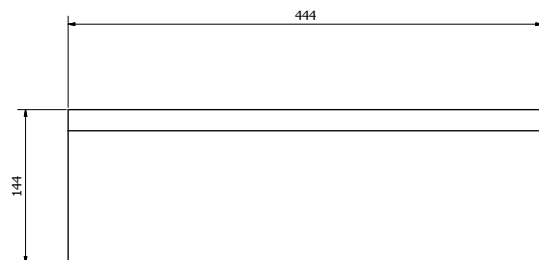
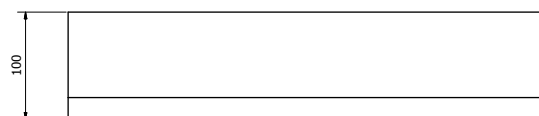
AR144 - STRAIGHT
APPROX. 14 kg



AR144XL - EXTERNAL 90° L/H (AS DRAWN)
AR144XR - EXTERNAL 90° R/H (HANDED)
APPROX. 14 kg



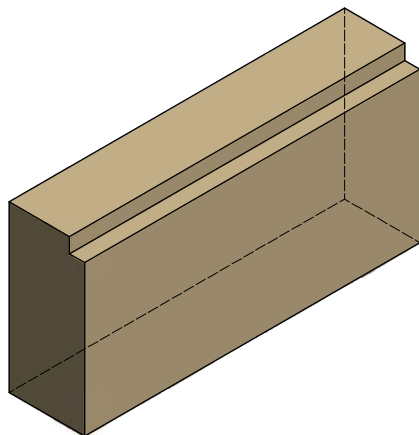
AR144IL - INTERNAL 90° L/H (AS DRAWN)
AR144IR - INTERNAL 90° R/H (HANDED)
APPROX. 14 kg



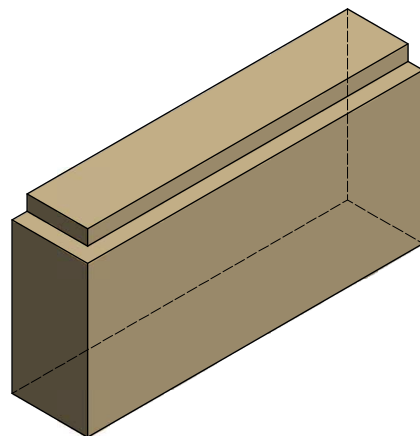
TYPICAL SECTION

**NOTE: STONE HEIGHTS TO CORRESPOND
WITH 225mm x 75mm BRICK MODULES
(6mm PERP AND BED JOINTS)**

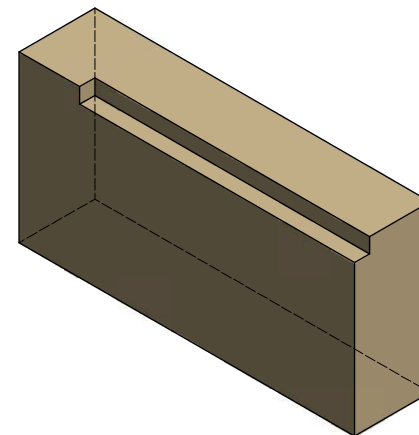
VOBSTER ARCHITECTURAL	
Vobster Architectural Newbury Works Coleford, Radstock Somerset, BA3 5RX Tf +44 (0)1263 558 7055 E/ enquiries@vobsterarchitectural.co.uk W/ www.vobsterarchitectural.co.uk	
<small>It is the responsibility of the customer to ensure the suitability of any of these products within their project. Vobster Architectural Ltd. can accept no responsibility for the accuracy or suitability of any information produced and offer no warranty whatsoever in this respect. All units weigh approx. 2.4 tonnes/m² although this will depend on the chosen mix design - please therefore contact us for confirmation of weights. To comply with CEN regulations please notify us if you require lifting sockets to be incorporated into units at time of order.</small>	
KEY DENOTES FINISHED FACES DENOTES DIRECTION OF WEATHERING	SCALE 1:5 U.S.O.
TITLE REBATED ASHLAR (144mm)	
Drawing No. VC-ASHRB-01 Rev	



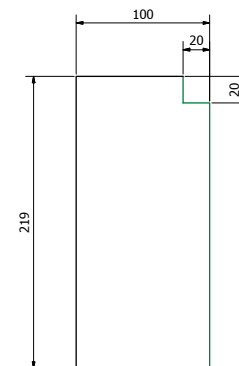
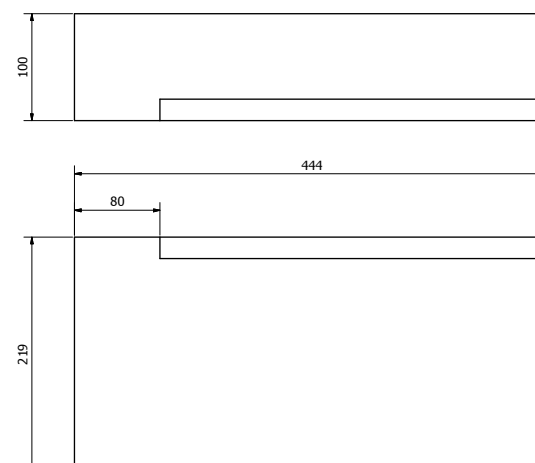
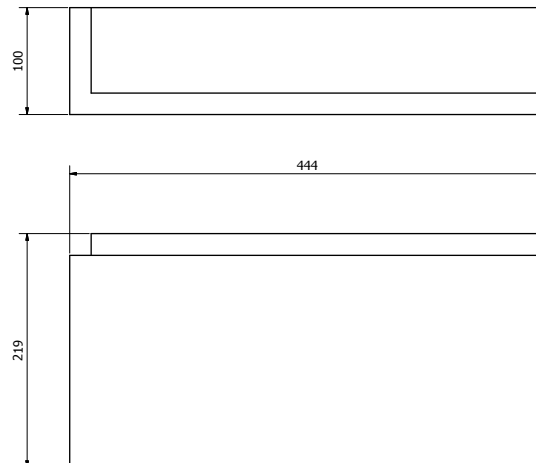
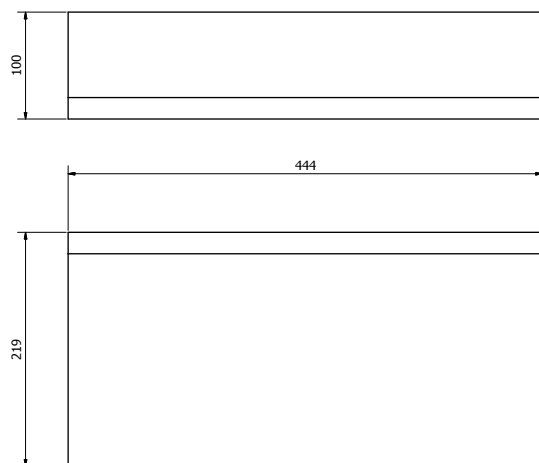
AR219 - STRAIGHT
APPROX. 22 kg



AR219XL - EXTERNAL 90° L/H (AS DRAWN)
AR219XR - EXTERNAL 90° R/H (HANDED)
APPROX. 22 kg



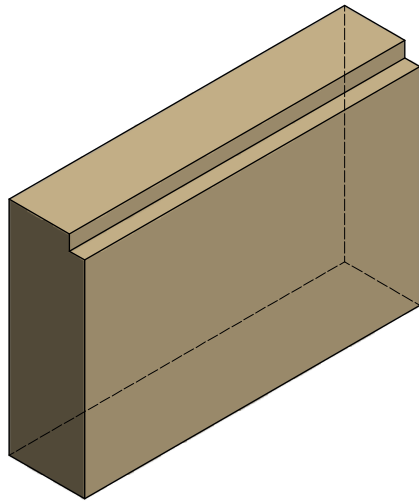
AR219IL - INTERNAL 90° L/H (AS DRAWN)
AR219IR - INTERNAL 90° R/H (HANDED)
APPROX. 22 kg



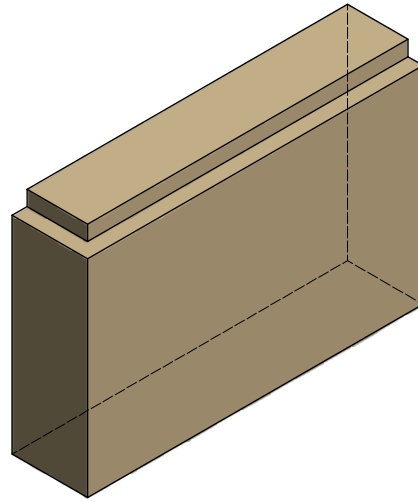
TYPICAL SECTION

**NOTE: STONE HEIGHTS TO CORRESPOND
WITH 225mm x 75mm BRICK MODULES
(6mm PERP AND BED JOINTS)**

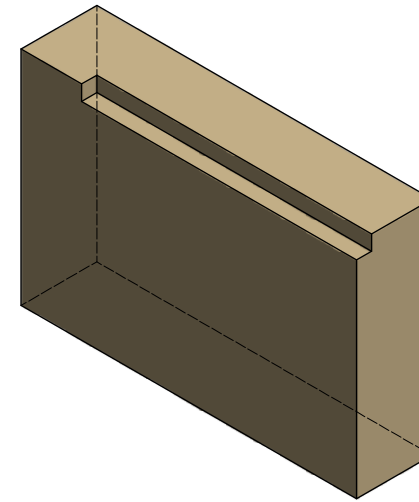
VOBSTER ARCHITECTURAL	
Vobster Architectural Newbury Works Coleford, Radstock Somerset, BA3 5RX T: +44 (0)203 968 7058 E: enquiries@vobsterarchitectural.co.uk W: www.vobsterarchitectural.co.uk	
<small>It is the responsibility of the customer to ensure the suitability of any of these products within their project. Vobster Architectural cannot accept responsibility for the accuracy or suitability of any information produced and offer no warranty whatsoever in this respect. All units weigh approx. 2.4 tonnes/m² although this will depend on the chosen mix design - please therefore contact us for confirmation of weights. To comply with CEN regulations please notify us if you require lifting sockets to be incorporated into units at time of order.</small>	
KEY DENOTES FINISHED FACES DENOTES DIRECTION OF WEATHERING	SCALE 1:5 U.S.O.
TITLE REBATED ASHLAR (219mm)	
Drawing No. VC-ASHRB-02 Rev 1	



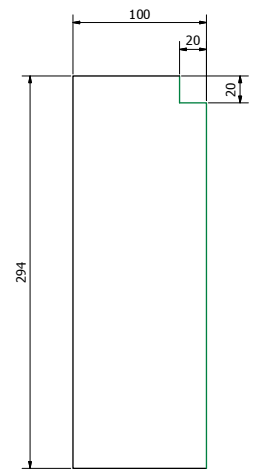
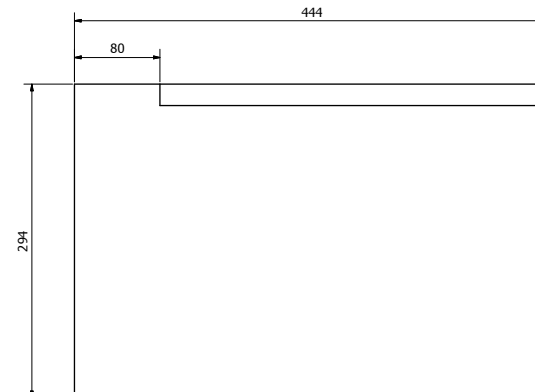
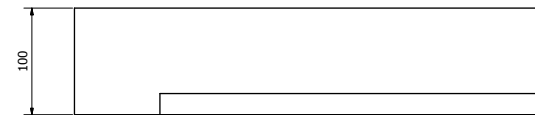
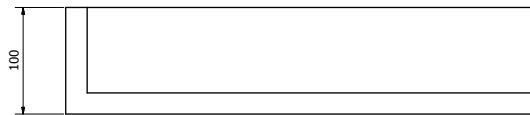
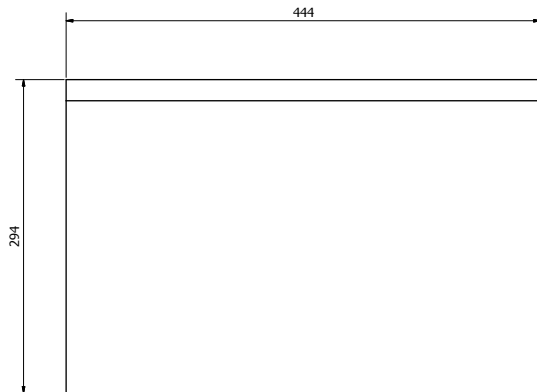
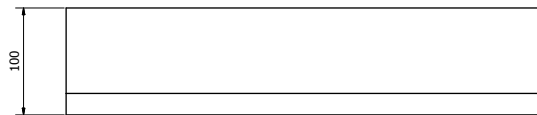
AR294 - STRAIGHT
APPROX. 30 kg



AR294XL - EXTERNAL 90 °L/H (AS DRAWN)
AR294XR - EXTERNAL 90° R/H (HANDED)
APPROX. 30 kg



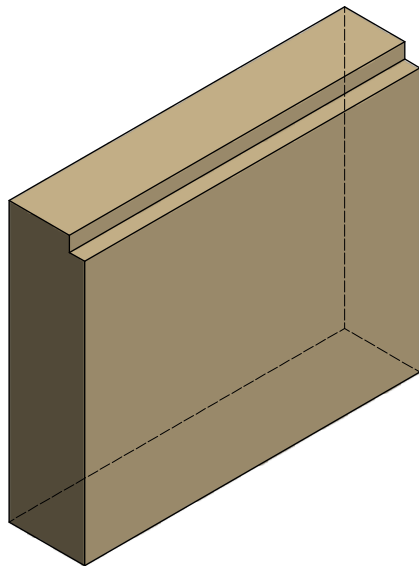
AR294IL - INTERNAL 90° L/H (AS DRAWN)
AR294IR - INTERNAL 90° R/H (HANDED)
APPROX. 30 kg



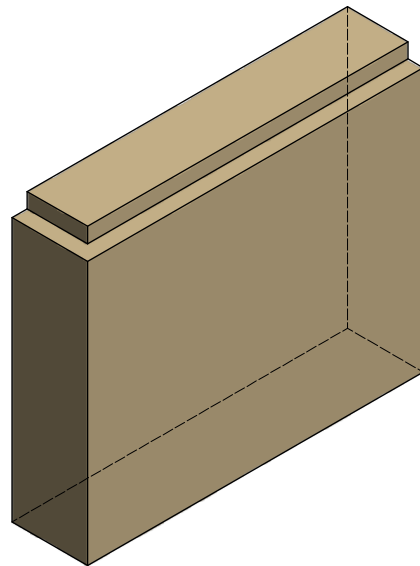
TYPICAL SECTION

**NOTE: STONE HEIGHTS TO CORRESPOND
WITH 225mm x 75mm BRICK MODULES
(6mm PERP AND BED JOINTS)**

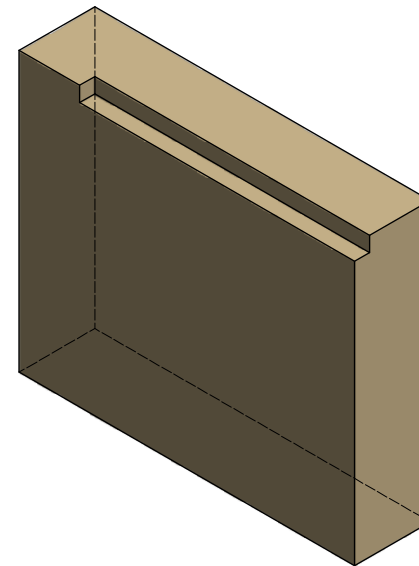
VOBSTER ARCHITECTURAL	
Vobster Architectural Newbury Works Coleford, Radstock Somerset, BA3 5RX T: +44 (0)203 968 7055 E: enquiries@vobsterarchitectural.co.uk W: www.vobsterarchitectural.co.uk	
<small>It is the responsibility of the customer to ensure the suitability of any of these products within their project. Vobster Architectural Ltd. can accept no responsibility for the accuracy or suitability of any information produced and offer no warranty whatsoever in this respect. All units weigh approx. 2.4 tonnes/m² although this will depend on the chosen mix design - please therefore contact us for confirmation of weights. To comply with CEN regulations please notify us if you require lifting sockets to be incorporated into units at time of order.</small>	
KEY DENOTES FINISHED FACES DENOTES DIRECTION OF WEATHERING	SCALE 1:5 U.S.O.
TITLE REBATED ASHLAR (294mm)	
Drawing No. VC-ASHRB-03 Rev	



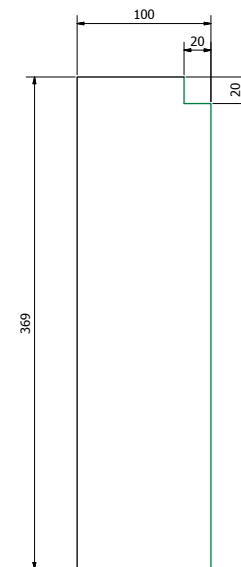
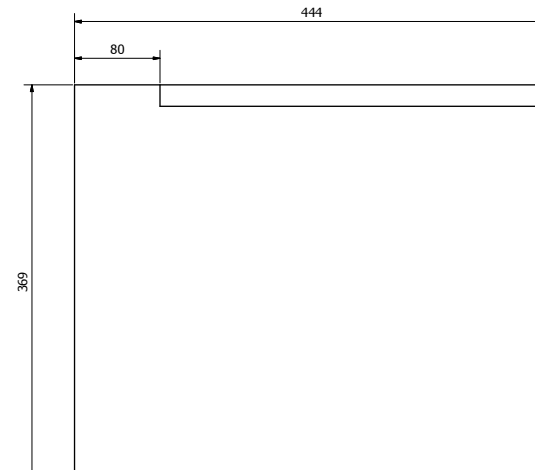
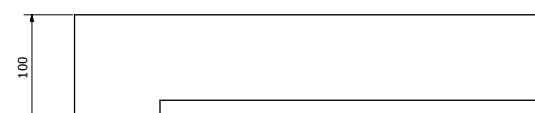
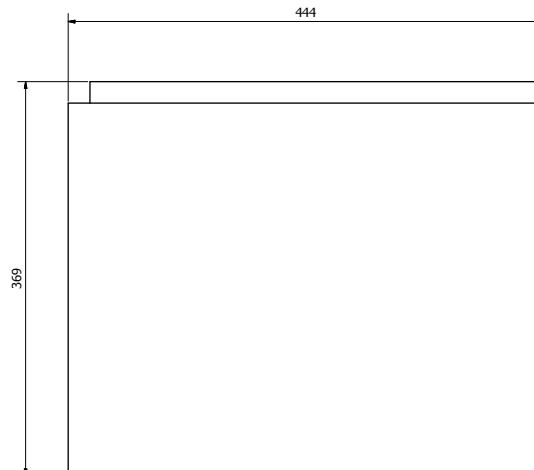
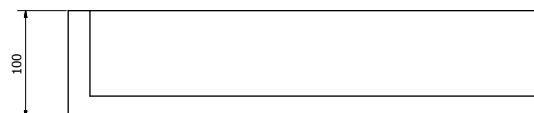
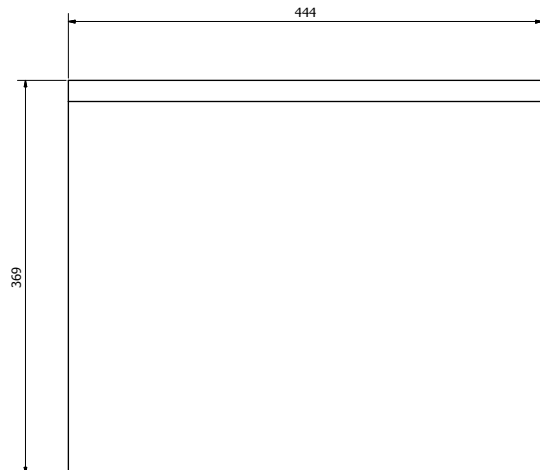
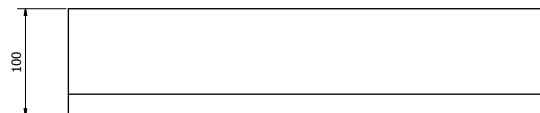
AR369 - STRAIGHT
APPROX. 37 kg



AR369XL - EXTERNAL 90 °L/H (AS DRAWN)
AR369XR - EXTERNAL 90° R/H (HANDED)
APPROX. 37 kg



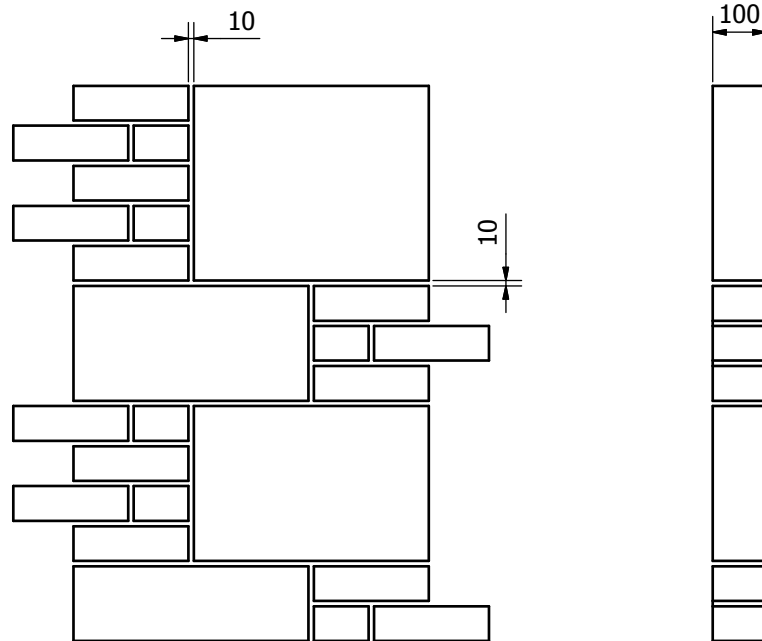
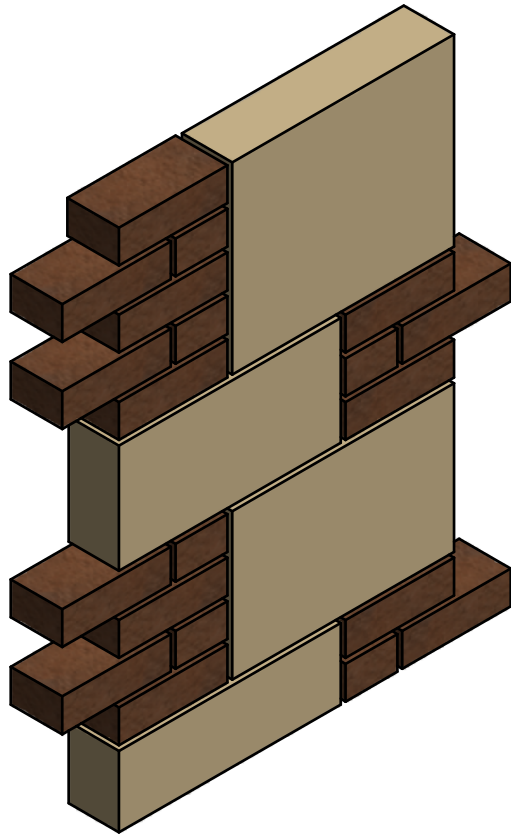
AR369IL - INTERNAL 90° L/H (AS DRAWN)
AR369IR - INTERNAL 90° R/H (HANDED)
APPROX. 37 kg



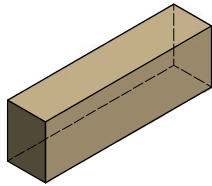
TYPICAL SECTION

**NOTE: STONE HEIGHTS TO CORRESPOND
WITH 225mm x 75mm BRICK MODULES
(6mm PERP AND BED JOINTS)**

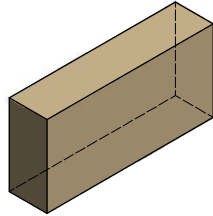
VOBSTER ARCHITECTURAL	
Vobster Architectural Newbury Works Coleford, Radstock Somerset, BA3 5RX Tel: +44 (0)1233 358 7058 E: enquiries@vobsterarchitectural.co.uk W: www.vobsterarchitectural.co.uk	
<small>It is the responsibility of the customer to ensure the suitability of any of these products within their project. Vobster Architectural Ltd. can accept no responsibility for the accuracy or suitability of any information produced and offer no warranty whatsoever in this respect. All units weigh approx. 2.4 tonnes/m² although this will depend on the chosen mix design - please therefore contact us for confirmation of weights. To comply with CEN regulations please notify us if you require lifting sockets to be incorporated into units at time of order.</small>	
KEY DENOTES FINISHED FACES DENOTES DIRECTION OF WEATHERING	SCALE 1:5 U.S.O.
TITLE REBATED ASHLAR (369mm)	
Drawing No. VC-ASHRB-04 Rev	



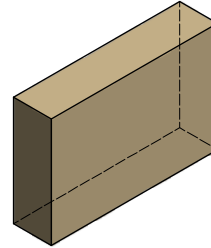
NOTE: STONE HEIGHTS TO CORRESPOND
WITH 225mm x 75mm BRICK MODULES
(10mm JOINTS)



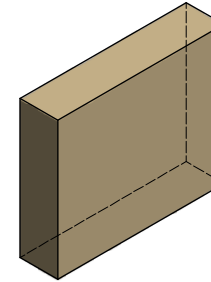
A140 - PLAIN
(‘A140F’ DENOTES FACED BOTH ENDS)
APPROX. 14 kg



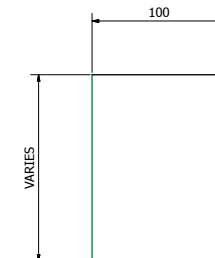
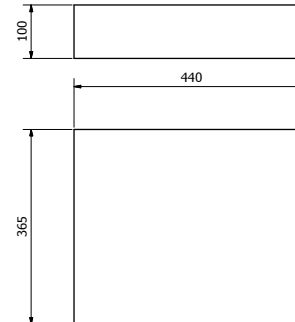
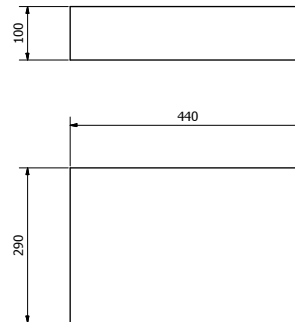
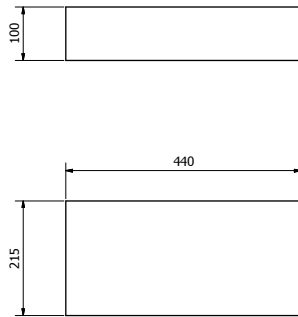
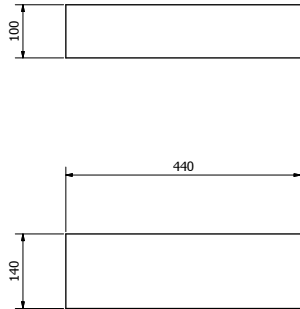
A215 - PLAIN
(‘A215F’ DENOTES FACED BOTH ENDS)
APPROX. 22 kg



A290 - PLAIN
(‘A290F’ DENOTES FACED BOTH ENDS)
APPROX. 29 kg



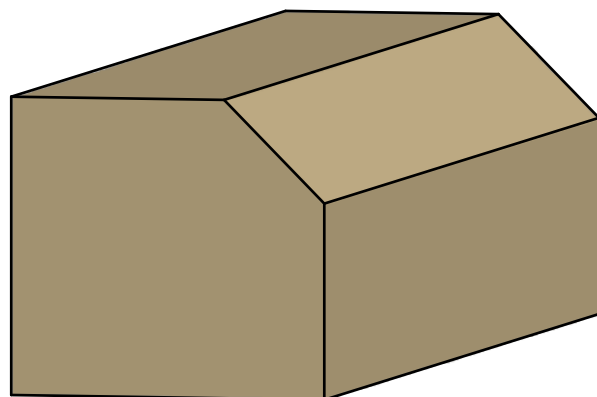
A365 - PLAIN
(‘A365F’ DENOTES FACED BOTH ENDS)
APPROX. 37 kg



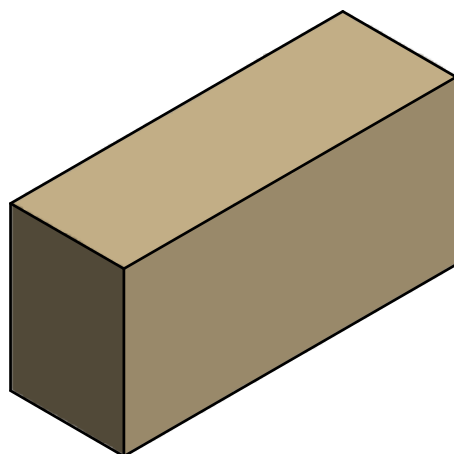
**NOTE: STONE HEIGHTS TO CORRESPOND
WITH 225mm x 75mm BRICK MODULES
(10mm JOINTS)**

TYPICAL SECTION

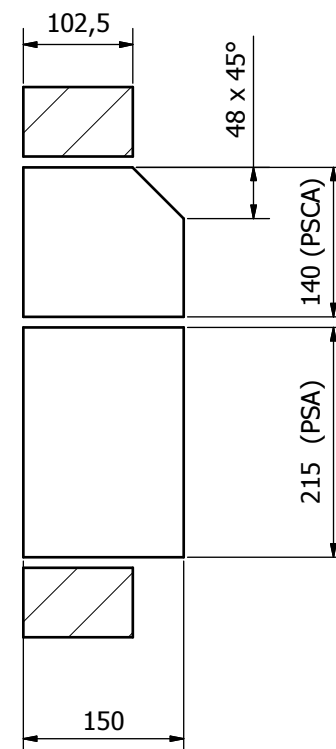
VOBSTER ARCHITECTURAL	
Vobster Architectural Newbury Works Coleford, Radstock Somerset, BA3 8RX Tel: +44 (0)203 968 7058 E/ enquiries@vobsterarchitectural.co.uk W/ www.vobsterarchitectural.co.uk	
<small>It is the responsibility of the customer to ensure the suitability of any of these products within their project. Vobster Architectural Ltd. can accept no responsibility for the accuracy or suitability of any information produced and offer no warranty whatsoever in this respect. All units weigh approx. 2.4 tonnes/m³ although this will depend on the chosen mix design - please therefore contact us for confirmation of weights. To comply with C.O.R. regulations please notify us if you require lifting sockets to be incorporated into units at time of order.</small>	
KEY	
—	DENOTES FINISHED FACES
→	DENOTES DIRECTION OF WEATHERING
SCALE	1:5 U.S.O.
TITLE	ASHLAR (10mm JOINTS)
Drawing No. VC-ASH10-01 Rev 1	



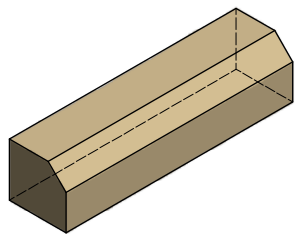
PSCA PLINTH (1 : 2.5)



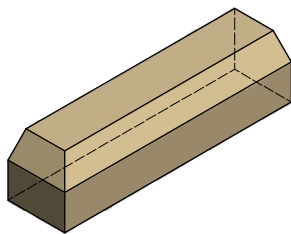
PSA SUB-PLINTH (1 : 5)



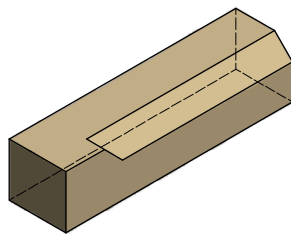
TYPICAL SECTION



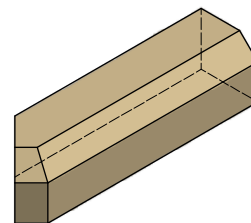
PSCA - STRAIGHT
APPROX. 29 kg



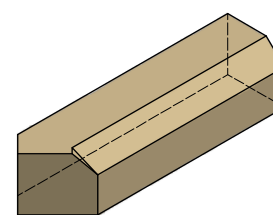
PSCA-XL - EXTERNAL 90° L/H (AS DRAWN)
PSCA-XR - EXTERNAL 90° R/H (HANDED)
APPROX. 28 kg



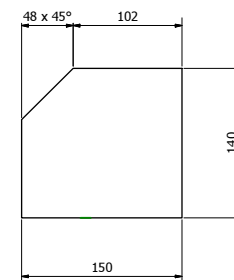
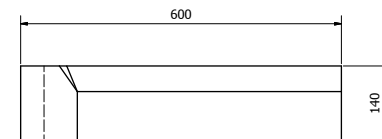
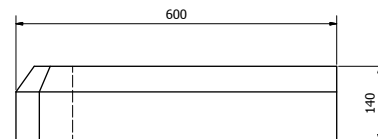
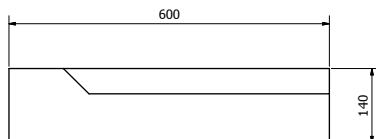
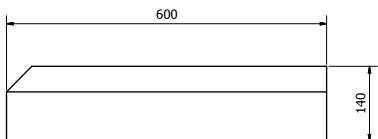
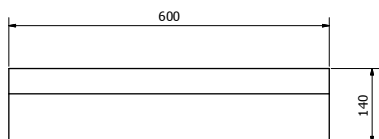
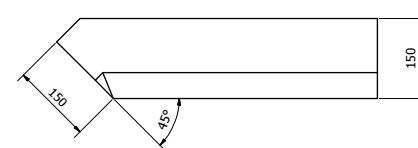
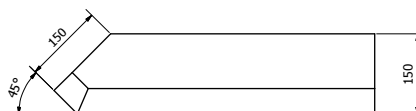
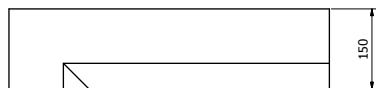
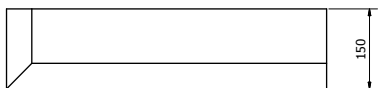
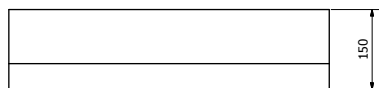
PSCA-IL - INTERNAL 90° L/H (AS DRAWN)
PSCA-IR - INTERNAL 90° R/H (HANDED)
APPROX. 28 kg



PSCA-45XL - EXTERNAL 45° L/H (AS DRAWN)
PSCA-45XR - EXTERNAL 45° R/H (HANDED)
APPROX. 26 kg



PSCA-45IL - EXTERNAL 45° L/H (AS DRAWN)
PSCA-45IR - EXTERNAL 45° R/H (HANDED)
APPROX. 27 kg



TYPICAL SECTION (1 : 2.5)

VOBSTER
ARCHITECTURAL

Vobster Architectural
Newbury Works
Coleford, Radstock
Somerset, BA5 9RX
T: +44 (0)1235 958 7058
E: enquiries@vobsterarchitectural.co.uk
W: www.vobsterarchitectural.co.uk

It is the responsibility of the customer to ensure the suitability of any of these products within their project.
Vobster Cast Stone Ltd. can accept no responsibility for the accuracy or suitability of any information produced and offer no warranty whatsoever in this respect. All units weigh approx. 2.4 tonnes/m² although this will depend on the chosen mix design - please therefore contact us for confirmation of weights.
To comply with C.E.N regulations please notify us if you require lifting sockets to be incorporated into units at time of order.

KEY
— DENOTES FINISHED FACES
→ DENOTES DIRECTION OF WEATHERING

SCALE 1:5 U.S.O.

TITLE
PSCA PLINTH

Drawing No. VC-PSCA-01 **Rev** 1