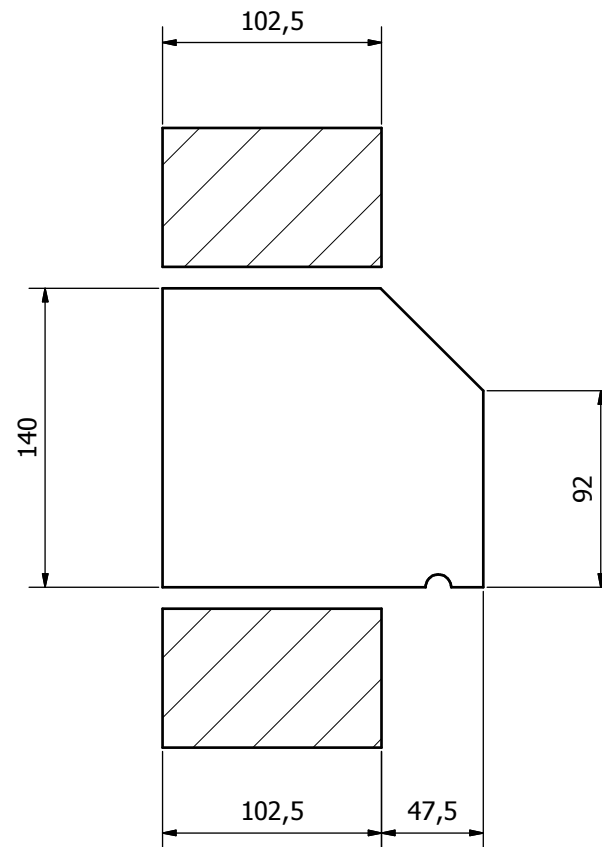
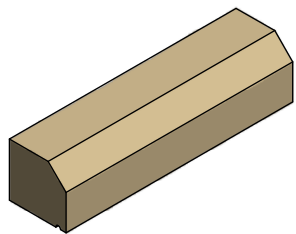


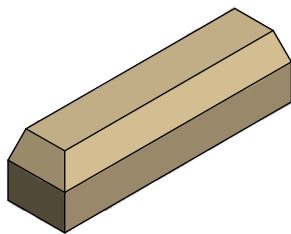
BSCA BAND COURSE



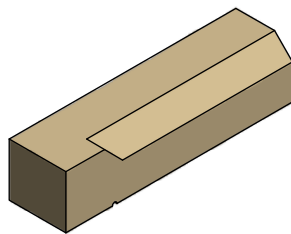
TYPICAL SECTION



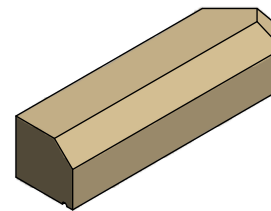
BSCA - STRAIGHT  
APPROX. 27 kg



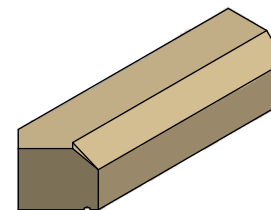
SCAXL - EXTERNAL 90° L/H (AS DRAWN)  
SCAXR - EXTERNAL 90° R/H (HANDED)  
APPROX. 27 kg



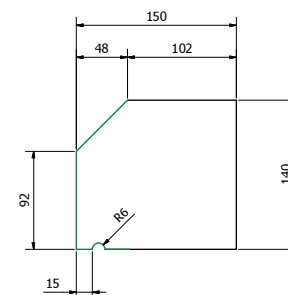
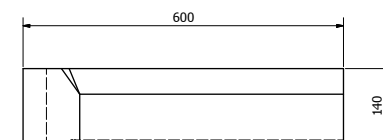
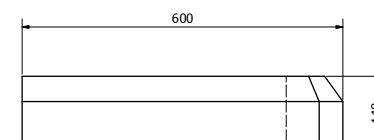
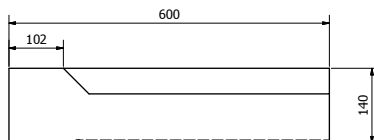
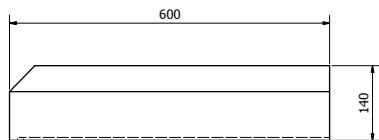
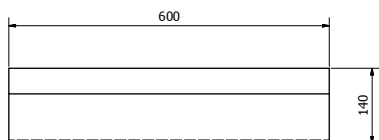
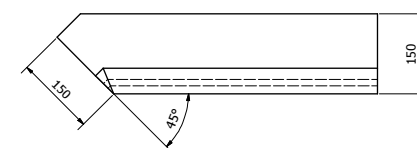
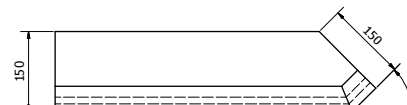
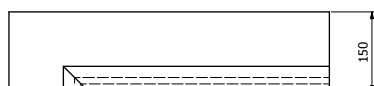
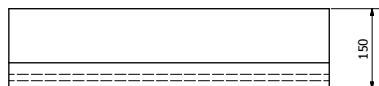
SCAHL - INTERNAL 90° L/H (AS DRAWN)  
SCAHR - INTERNAL 90° R/H (HANDED)  
APPROX. 28 kg



SCAXX - EXTERNAL 45° R/H (AS DRAWN)  
APPROX. 25 kg



SCAHH - INTERNAL 45° L/H (AS DRAWN)  
APPROX. 25 kg



TYPICAL SECTION ( 1 : 2.5 )

## VOBSTER ARCHITECTURAL

Vobster Architectural  
Newbury Works  
Coleford, Radstock  
Somerset, BA3 9RX  
Tel: +44 (0)1203 968 7058  
Email: enquiries@vobsterarchitectural.co.uk  
Web: www.vobsterarchitectural.co.uk

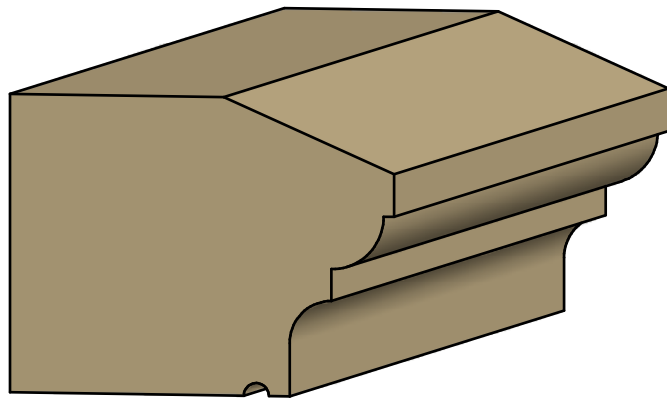
It is the responsibility of the customer to ensure the suitability of any of these products within their project. Vobster Architectural Ltd. can accept no responsibility for the accuracy or suitability of any information produced and offer no warranty whatsoever in this respect. All units weigh approx. 2.4 tonnes/m<sup>2</sup> although this will depend on the chosen mix design - please therefore contact us for confirmation of weights. To comply with CEN regulations please notify us if you require lifting sockets to be incorporated into units at time of order.

**KEY**  
— DENOTES FINISHED FACES  
— DENOTES DIRECTION OF WEATHERING

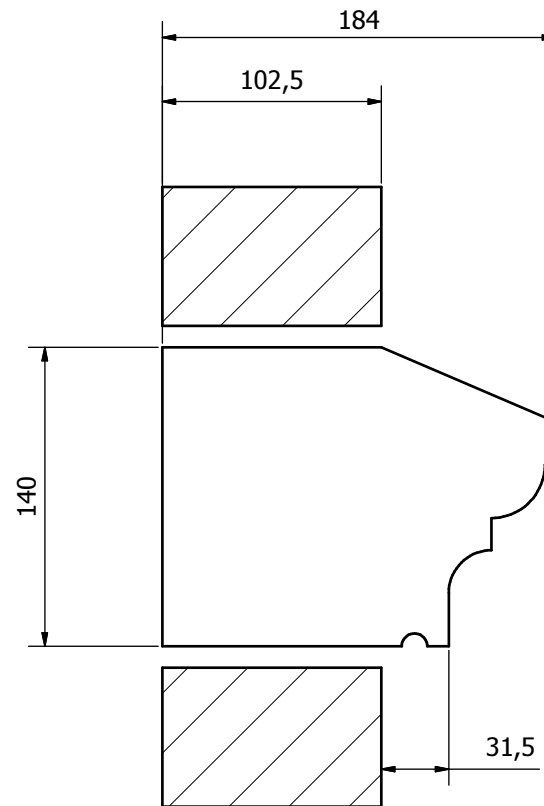
**SCALE** 1:5 U.S.O.

**TITLE**  
BSCA BAND COURSE

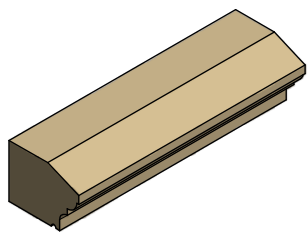
Drawing No. VC-BC140-02 Rev



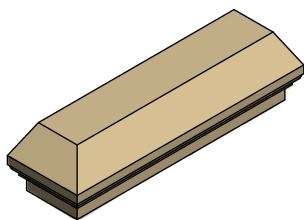
BST2 BAND COURSE



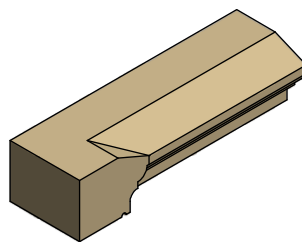
TYPICAL SECTION



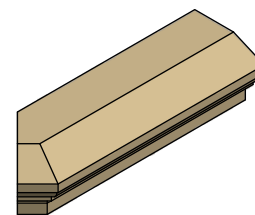
BST2 - STRAIGHT  
APPROX. 30 kg



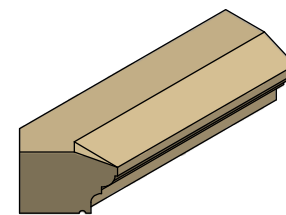
BST2-XL - EXTERNAL 90° L/H (AS DRAWN)  
BST2-XR - EXTERNAL 90° R/H (HANDED)  
APPROX. 28 kg



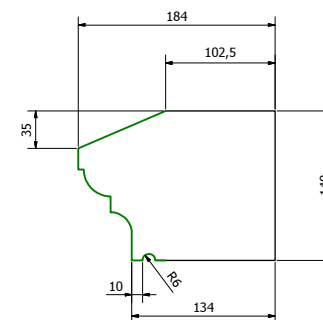
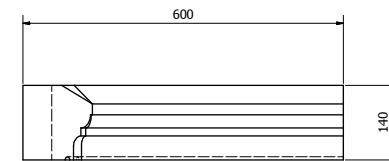
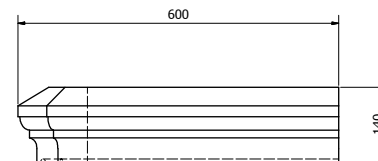
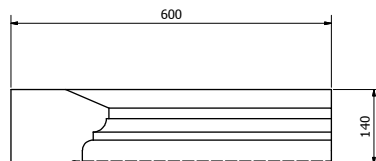
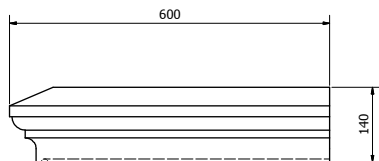
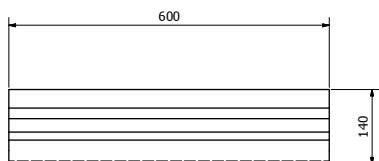
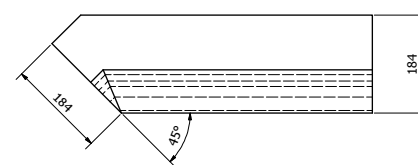
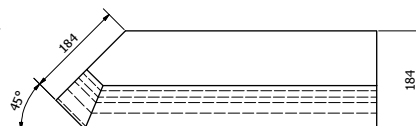
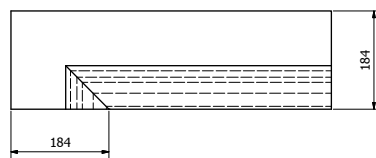
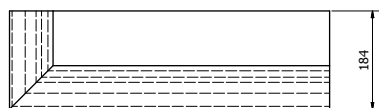
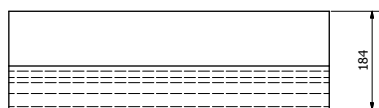
BST2-IL - INTERNAL 90° L/H (AS DRAWN)  
BST2-IR - INTERNAL 90° R/H (HANDED)  
APPROX. 31 kg



BST2-45XL - EXTERNAL 45° L/H (AS DRAWN)  
BST2-45XR - EXTERNAL 45° R/H (HANDED)  
APPROX. 26 kg



BST2-45IL - INTERNAL 45° L/H (AS DRAWN)  
BST2-45IR - INTERNAL 45° R/H (HANDED)  
APPROX. 27 kg



TYPICAL SECTION ( 1 : 2.5 )

**VOBSTER**  
ARCHITECTURAL

Vobster Architectural  
Newbury Works  
Coleford, Radstock  
Somerset, BA3 9RX  
Tel: +44 (0)203 968 7058  
Email: enquiries@vobsterarchitectural.co.uk  
Web: www.vobsterarchitectural.co.uk

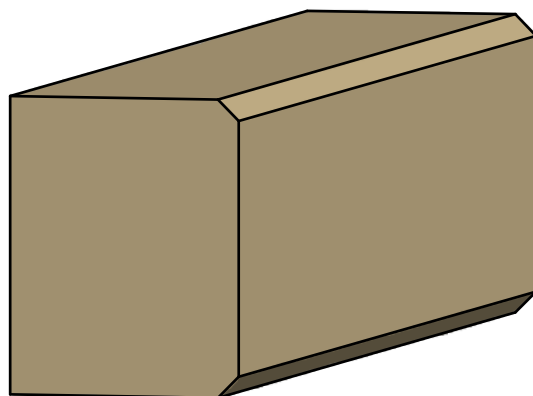
It is the responsibility of the customer to ensure the suitability of any of these products within their project. Vobster Architectural Ltd. can accept no responsibility for the accuracy or suitability of any information produced and offer no warranty whatsoever in this respect. All units weigh approx. 2.4 tonnes/m² although this will depend on the chosen rim design - please therefore contact us for confirmation of weights. To comply with CEN regulations please notify us if you require lifting sockets to be incorporated into units at time of order.

**KEY**  
— DENOTES FINISHED FACES  
— DENOTES DIRECTION OF WEATHERING

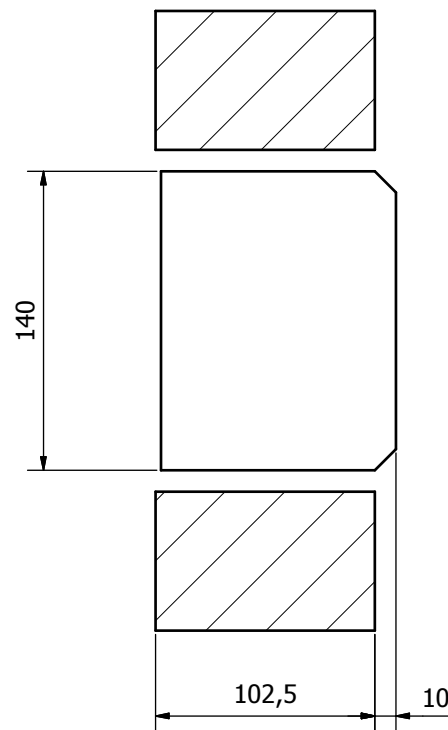
**SCALE** 1:5 U.S.O.

**TITLE**  
BST2 BAND COURSE

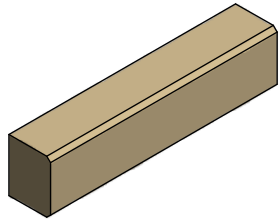
**Drawing No.** VC-BC140-01 **Rev** 1



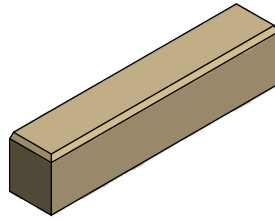
CS1 BAND COURSE



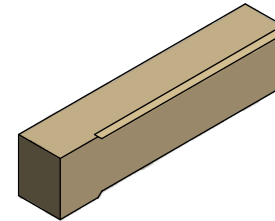
TYPICAL SECTION



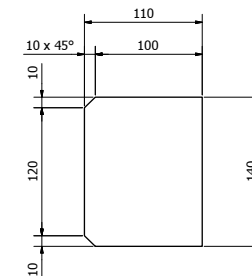
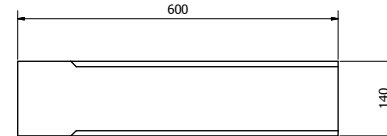
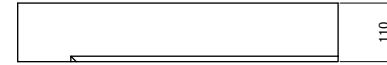
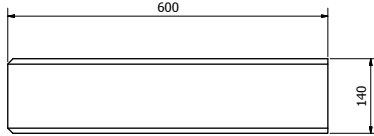
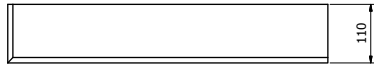
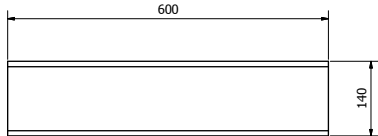
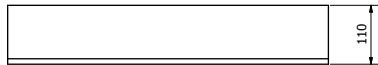
CS1 - STRAIGHT  
APPROX. 21 kg



CSE - EXTERNAL 90° L/H & R/H  
APPROX. 21 kg



CSI - INTERNAL 90° L/H & R/H  
APPROX. 21 kg



TYPICAL SECTION ( 1 : 2.5 )

**VOBSTER**  
ARCHITECTURAL

Vobster Architectural  
Newbury Works  
Coleford, Radstock  
Somerset, BA3 9RX  
Tel: +44 (0)203 968 7058  
E: enquiries@vobsterarchitectural.co.uk  
W: www.vobsterarchitectural.co.uk

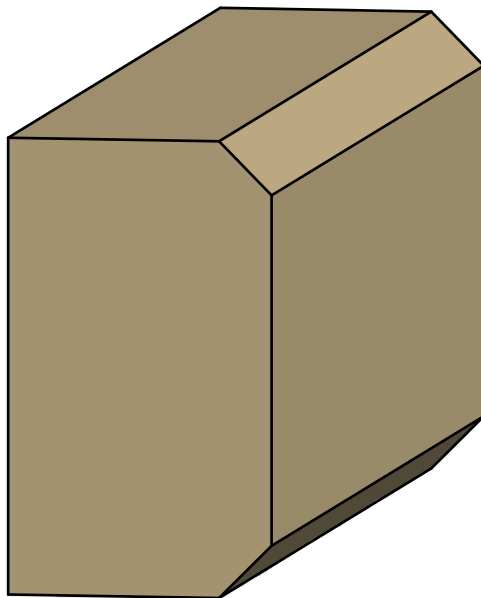
It is the responsibility of the customer to ensure the suitability of any of these products within their project. Vobster Cast Stone Ltd. can accept no responsibility for the accuracy or suitability of any information produced and offer no warranty whatsoever in this respect. All units weigh approx. 2.4 tonnes/m² although this will depend on the chosen mix design - please therefore contact us for confirmation of weights. To comply with CEN regulations please notify us if you require lifting sockets to be incorporated into units at time of order.

**KEY**  
— DENOTES FINISHED FACES  
— DENOTES DIRECTION OF WEATHERING

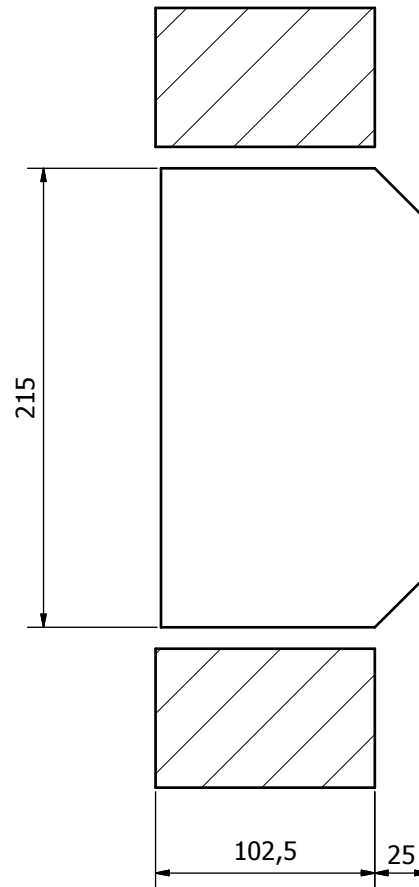
**SCALE** 1:5 U.S.O.

**TITLE**  
CS1 BAND COURSE

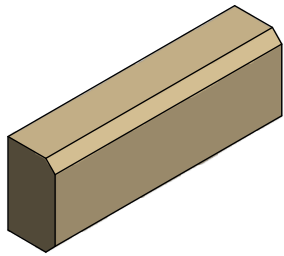
**Drawing No.** VC-BC140-03 **Rev** 1



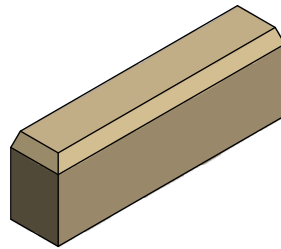
CS2 BAND COURSE



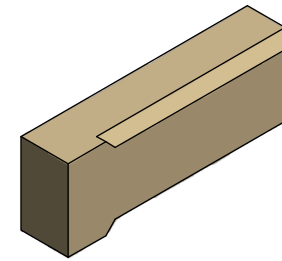
TYPICAL SECTION



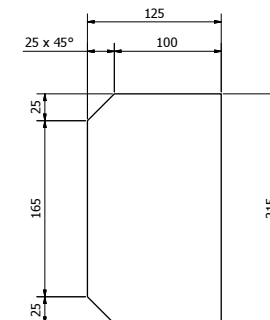
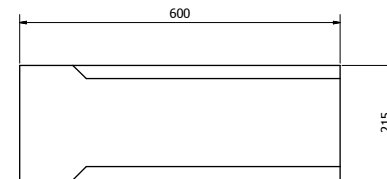
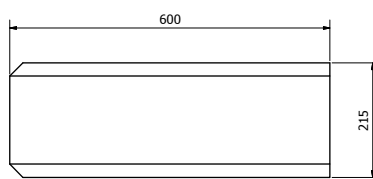
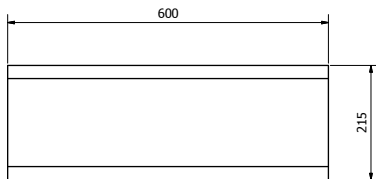
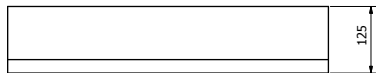
CS2 - STRAIGHT  
APPROX. 36 kg



CS2E - EXTERNAL 90° L/H & R/H  
APPROX. 36 kg



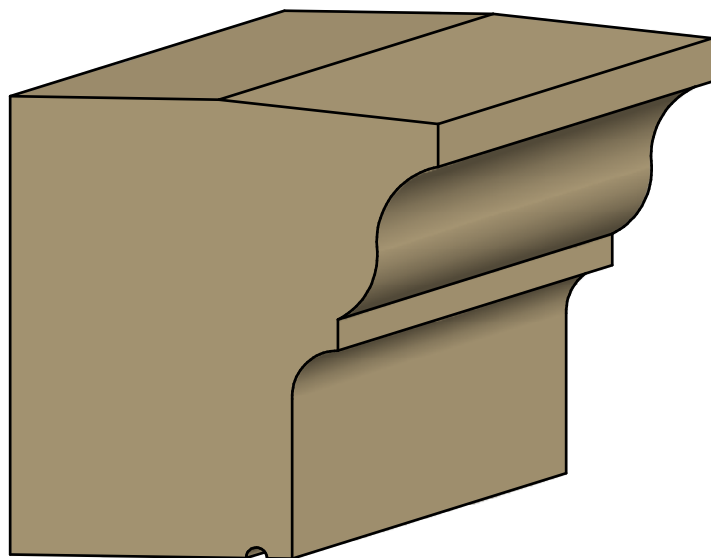
CS2I - INTERNAL 90° L/H & R/H  
APPROX. 36 kg



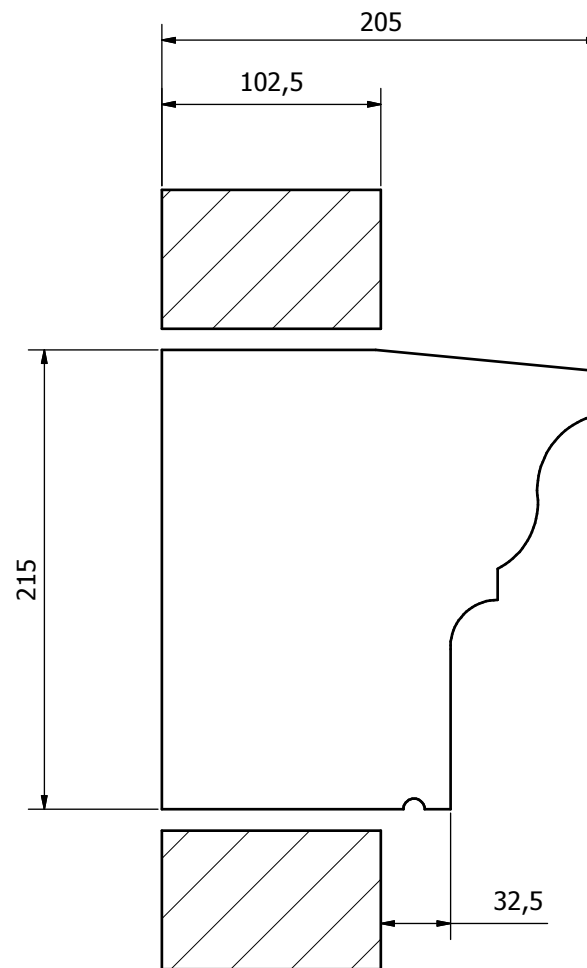
TYPICAL SECTION ( 1 : 2.5 )

|  |                                 |
|--|---------------------------------|
| <b>VOBSTER</b><br>ARCHITECTURAL  |                                 |
| Vobster Architectural<br>Newbury Works<br>Coleford, Radstock<br>Somerset, BA3 9RX<br>Tel: +44 (0)203 968 7058<br>E: enquiries@vobsterarchitectural.co.uk<br>W: www.vobsterarchitectural.co.uk  |                                 |
| <small>It is the responsibility of the customer to ensure the suitability of any of these products within their project. Vobster Cast Stone Ltd. can accept no responsibility for the accuracy or suitability of any information produced and offer no warranty whatsoever in this respect. All units weigh approx. 2.4 tonnes/m² although this will depend on the chosen mix design - please therefore contact us for confirmation of weights. To comply with CEN regulations please notify us if you require lifting sockets to be incorporated into units at time of order.</small> |                                 |
| <b>KEY</b>   |                                 |
| —  | DENOTES FINISHED FACES          |
| →  | DENOTES DIRECTION OF WEATHERING |
| <b>SCALE</b>   | 1:5 U.S.O.                      |
| <b>TITLE</b><br>CS2 BAND COURSE  |                                 |
| Drawing No. VC-BC215-03 Rev  |                                 |

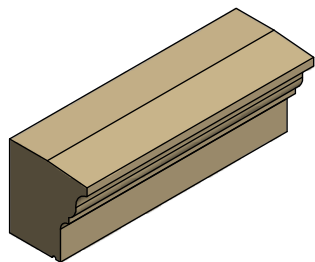




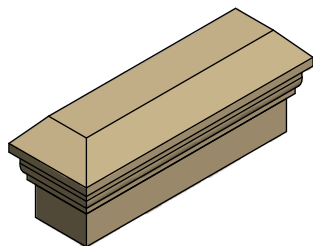
MBB BAND COURSE



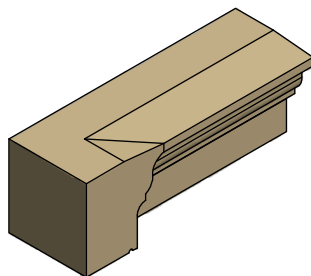
TYPICAL SECTION



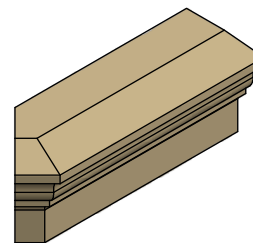
MBB - STRAIGHT  
APPROX. 47 kg



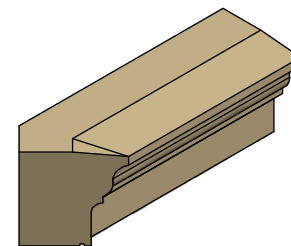
MBB-XL - EXTERNAL 90° L/H (AS DRAWN)  
MBB-XR - EXTERNAL 90° R/H (HANDED)  
APPROX. 44 kg



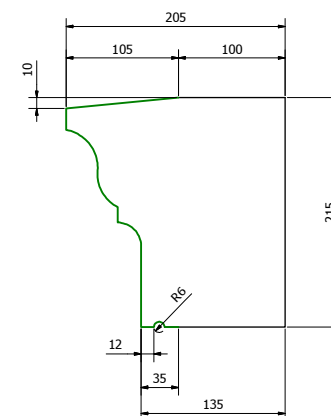
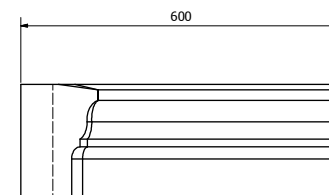
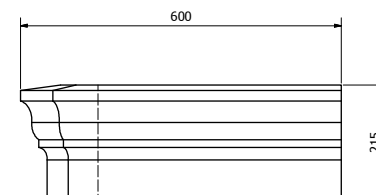
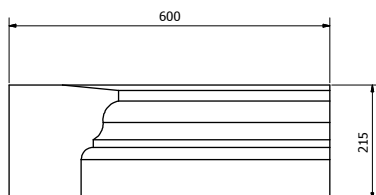
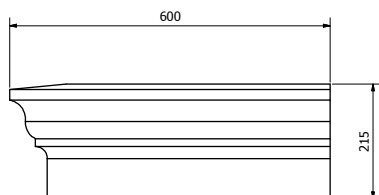
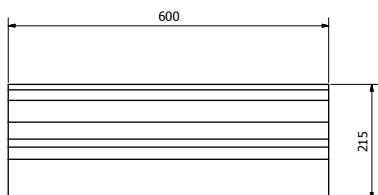
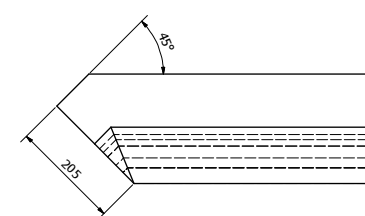
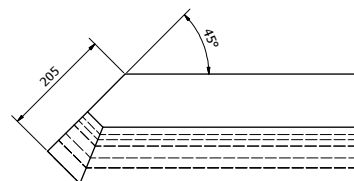
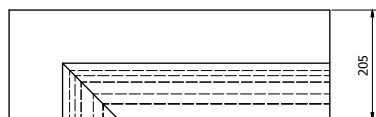
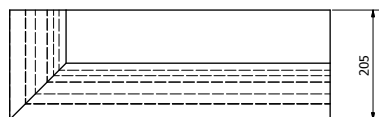
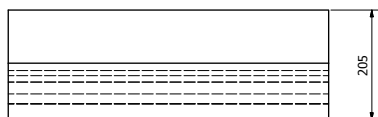
MBB-IL - INTERNAL 90° L/H (AS DRAWN)  
MBB-IR - INTERNAL 90° R/H (HANDED)  
APPROX. 50 kg



MBB-45XL - EXTERNAL 45° L/H (AS DRAWN)  
MBB-45XR - EXTERNAL 45° R/H (HANDED)  
APPROX. 41 kg

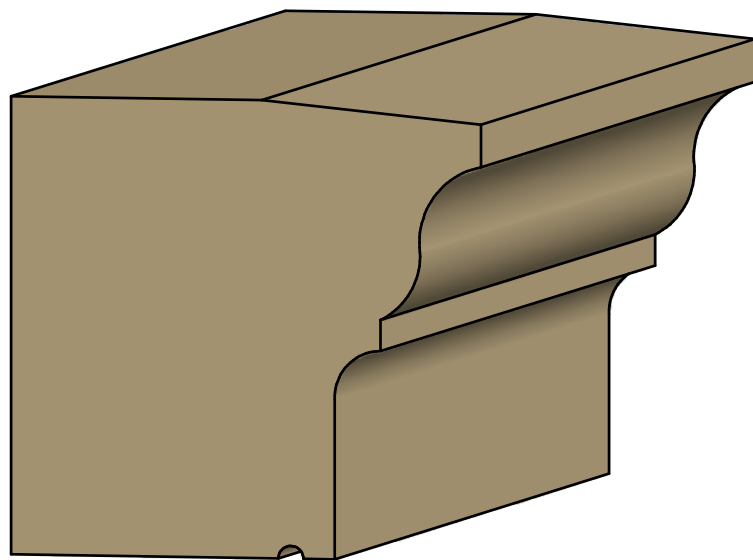


MBB-45IL - INTERNAL 45° L/H (AS DRAWN)  
MBB-45IR - INTERNAL 45° R/H (HANDED)  
APPROX. 44 kg

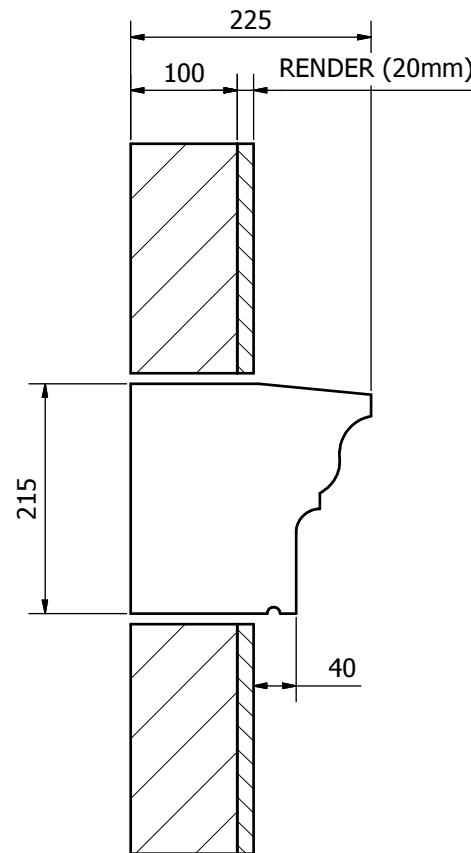


TYPICAL SECTION ( 1 : 2.5 )

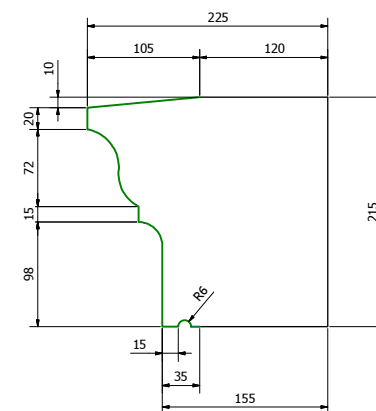
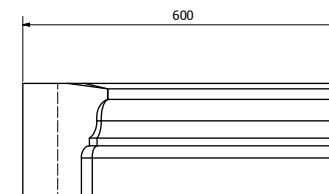
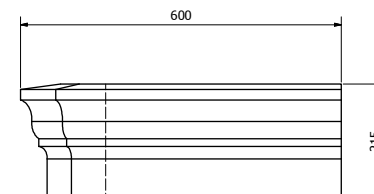
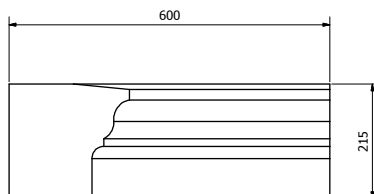
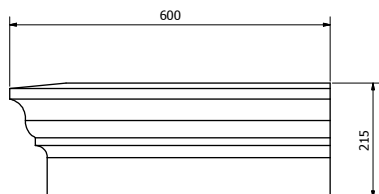
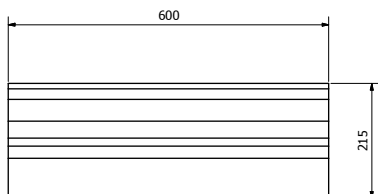
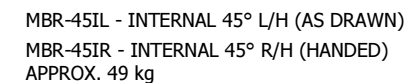
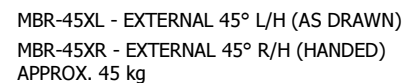
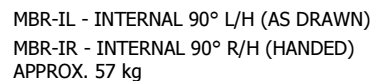
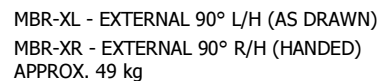
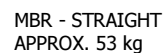
|   |                         |
|---|-------------------------|
| <b>VOBSTER</b><br>ARCHITECTURAL   |                         |
| Vobster Architectural<br>Newbury Works<br>Coleford, Radstock<br>Somerset, BA3 9RX<br>Tel: +44 (0)1203 968 7058<br>Email: enquiries@vobsterarchitectural.co.uk<br>Web: www.vobsterarchitectural.co.uk  |                         |
| <small>It is the responsibility of the customer to ensure the suitability of any of these products within their project. Vobster Cast Stone Ltd. can accept no responsibility for the accuracy or suitability of any information produced and offer no warranty whatsoever in this respect. All units weigh approx. 2.4 tonnes/m² although this will depend on the chosen mix design - please therefore contact us for confirmation of weights. To comply with C.E.N. regulations please notify us if you require lifting sockets to be incorporated into units at time of order.</small> |                         |
| <b>KEY</b><br>DENOTES FINISHED FACES<br>DENOTES DIRECTION OF WEATHERING   | <b>SCALE</b> 1:5 U.S.O. |
| <b>TITLE</b><br>MBB BAND COURSE   |                         |
| <b>Drawing No.</b> VC-BC215-01 <b>Rev</b>   |                         |



MBR BAND COURSE



TYPICAL SECTION



TYPICAL SECTION ( 1 : 2.5 )