

VOBSTER

ARCHITECTURAL

# Bespoke Cast Stone & Masonry Design

Wet Cast Stone | Semi-Dry Stone | Glass Reinforced Concrete

[www.vobsterarchitectural.co.uk](http://www.vobsterarchitectural.co.uk)



**VOBSTER**

ARCHITECTURAL

## Contents

<b>Why cast Stone?</b>	<b>3</b>
<b>What is cast stone?</b>	<b>4</b>
<b>Wet cast manufacturing</b>	<b>5</b>
<b>Semi-dry manufacturing</b>	<b>6</b>
<b>Glass reinforced concrete (GRC)</b>	<b>7</b>
<b>Projects</b>	<b>8</b>

## Cast stone masonry products

As a cast stone company, at Vobster Architectural we specialise in designing, detailing and manufacturing premium quality wet cast stone, semi-dry stone and glass reinforced concrete (GRC) products.

We've spent more than 55 years developing and refining our solutions and today provide a level of service that we believe is second to none.

It's how we work that makes the biggest difference. We aim to collaborate with you as closely and as early as possible in your project, to gain a complete understanding of what's needed. It means we can spot opportunities, highlight potential problems, save you time and money and maximise the quality of the final build. This is value engineering with personal attention to detail.




## What is cast stone?

Cast stone is a Portland cement based architectural precast concrete product manufactured incorporating high quality fine and coarse aggregates. It is regularly used in areas with sensitive planning constraints or where quarried natural stone is the prominent material.

The use of cast stone offers the designer the flexibility to choose their required colour, texture, finish and stone unit dimensions. Frequently manufactured products include finishes contain no pigmentation and are solely the natural colours of the aggregates within them.

The performance of cast stone is superior to quarried natural stone with regard to its increased strength and reduced moisture absorption, resulting in improved freeze/thaw durability. This offers the designer a new range of options such as bespoke sized units with stand-alone structural performance which is not achievable from quarried natural stone.



**VOBSTER**


ARCHITECTURAL

## Why choose wet cast stone?

Our wet cast stone manufacturing process offers a proven, uncompromised balance of strengths that can be fine-tuned for every project.

The wet cast stone manufacturing process provides a close grained, smooth and dense surface which offers precise rendering of fine details. The mix of raw materials in this process uses considerably more water than in the semi-dry process and offers a through colour homogenous mix which exposes the natural aggregate colours within the material when etched. This gives the finished stone the look and feel of quarried natural stone.

With over 55 years' experience Vobster Architectural have a well-established reputation for producing only the highest quality materials for use in a wide range of construction projects including retail, residential and commercial schemes.




VOBSTER

ARCHITECTURAL

## Why choose semi-dry cast stone?

When short lead-in times and cost efficiency are paramount, our semi-dry manufacturing is the answer. Production standards and materials are still of the highest order, but the processes are tailor-made to reduce costs and save time.

A key advantage of semi-dry cast stone is that multiple casts can be taken from each mould at a quicker rate, due to the lower water content. The mould can often be removed from the finished piece almost straight away. This technique requires no secondary finishing or treatment and can be supplied to you in most colours to closely match existing stonework.




VOBSTER

ARCHITECTURAL

## GRC - Perfect for technical challenges

Glass reinforced concrete (GRC), is a versatile advanced product designed to answer difficult challenges posed by your build. Essentially, it's a wet cast product with integrated glass fibres, and as a result of its thin-wall construction, it is incredibly light and can therefore be used as a durable fixed cladding in places where more traditional materials could not be applied, such as in overhanging soffits.

Created in slim sections, GRC has major advantages over standard pre-cast reinforced concrete, because the glass fibre elements allow the decrease in product thickness that results in the finished unit being approximately 80% lighter. Compressive strength is also greater as it will be in excess of 50KN/mm<sup>2</sup> and, crucially, it has excellent flexural performance due to the inclusion of the highest quality alkali resistant glass fibres.



VOBSTER

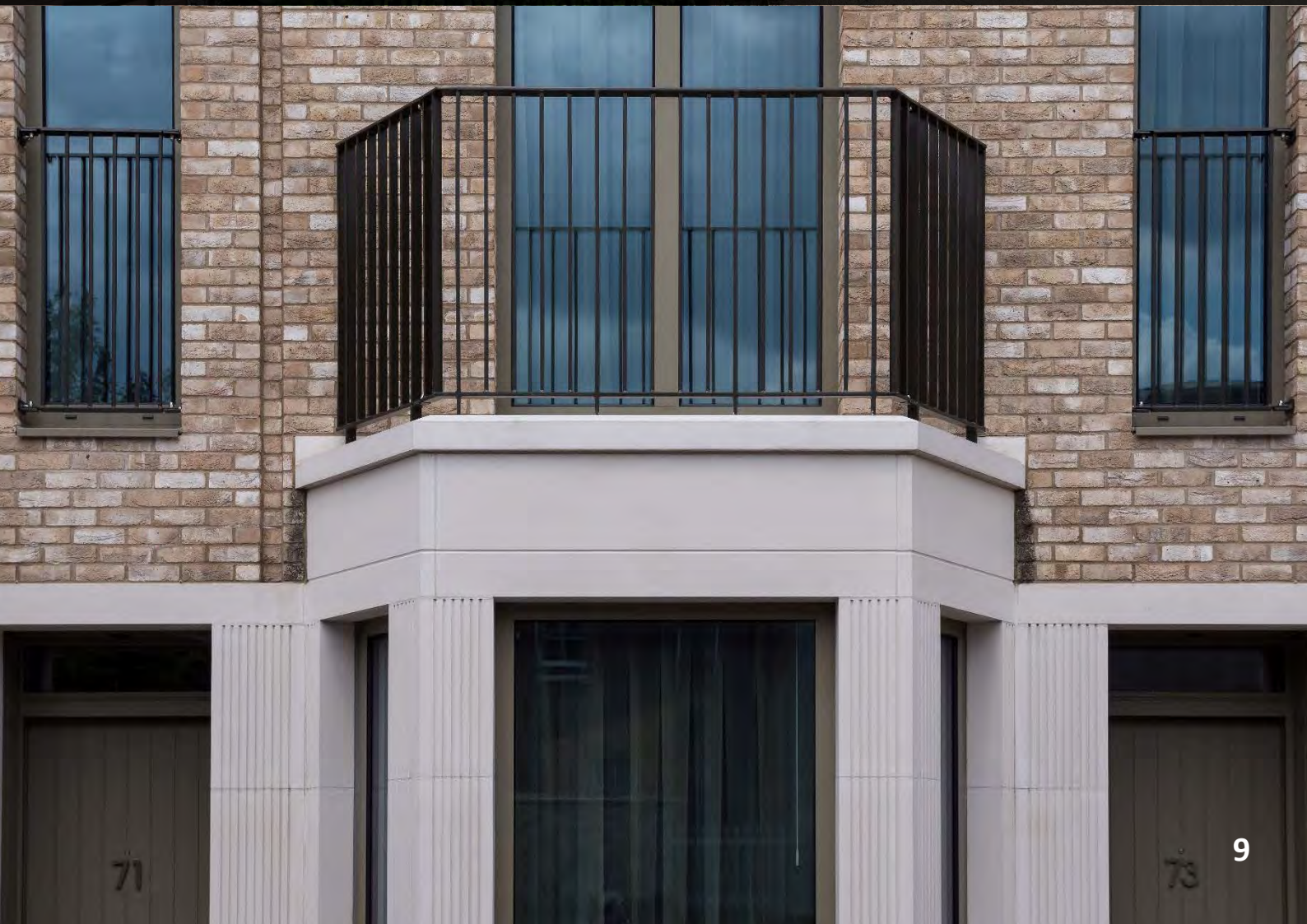
ARCHITECTURAL

## Wansey Street London

Wansey Street forms part of the multi-phase Elephant Park masterplan led by Lendlease, in partnership with Southwark Council. The £2.3 billion regeneration masterplan aims to provide the area with new life by creating thousands of high-quality new build homes, job and business opportunities and a large green space for residents and visitors to socialise in.

Located in the southern tip of the vast scheme, Wansey Street comprises of 22 high end terrace dwellings wrapped around a central communal garden space. This development is a major component of the Elephant and Park regeneration and occupies a key city location bounded by Walworth Town Hall.





VOBSTER

ARCHITECTURAL

## Windlesham

Bristol-based stonemasons Rowland turned to Vobster Architectural to create a stunning exterior look for this luxury one-off California-style residential dwelling.

With 22,000 square feet of floor space over four floors, Windlesham Court sits between Ascot and Sunningdale in one of the most sought-after locations in England. Set in four acres of landscaped gardens and woodland in leafy Surrey, it has eight bedrooms, nine bathrooms, a spa, home cinema, indoor swimming pool and a six-car garage.

It's a palatial country house for the most discerning buyer.

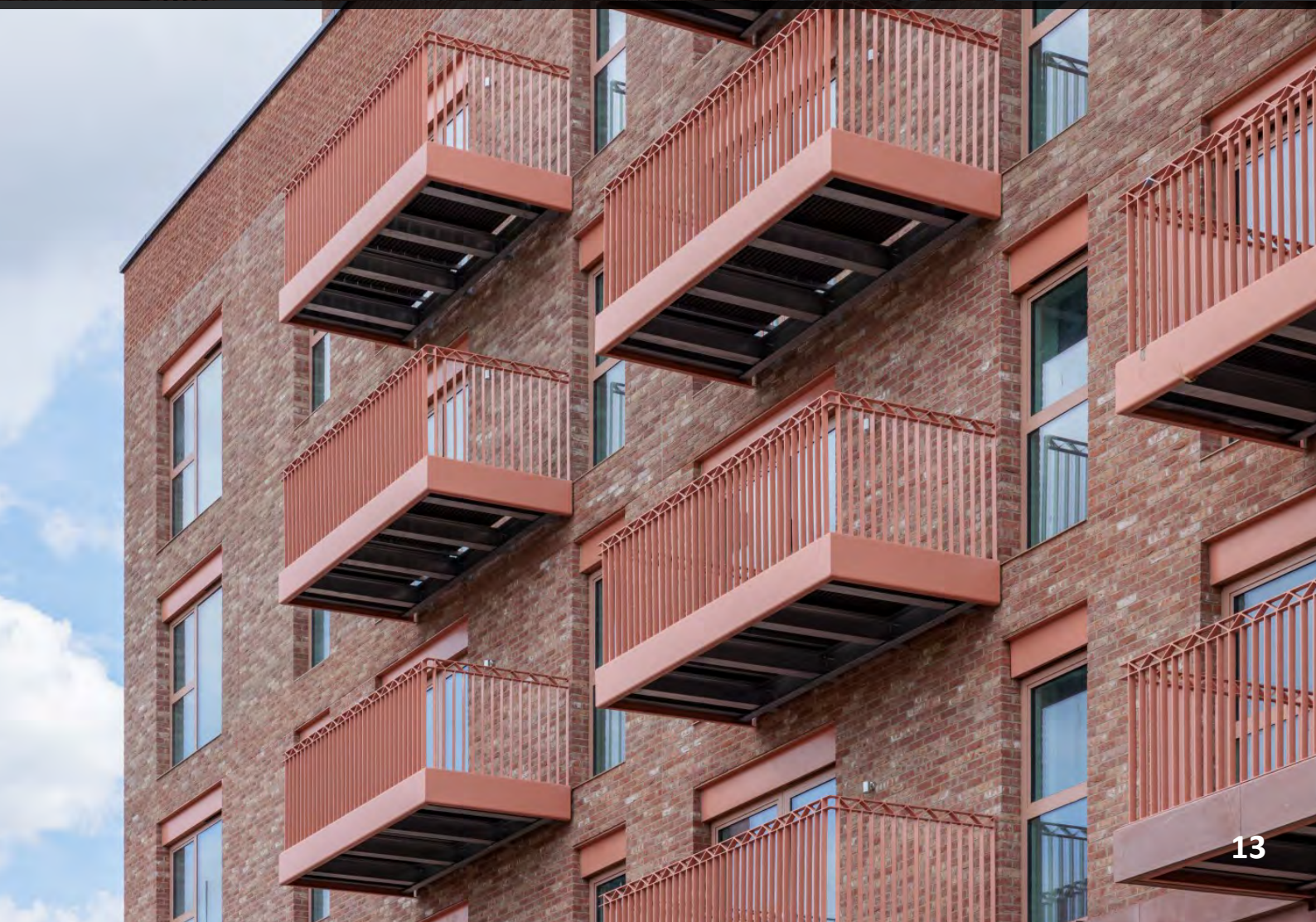
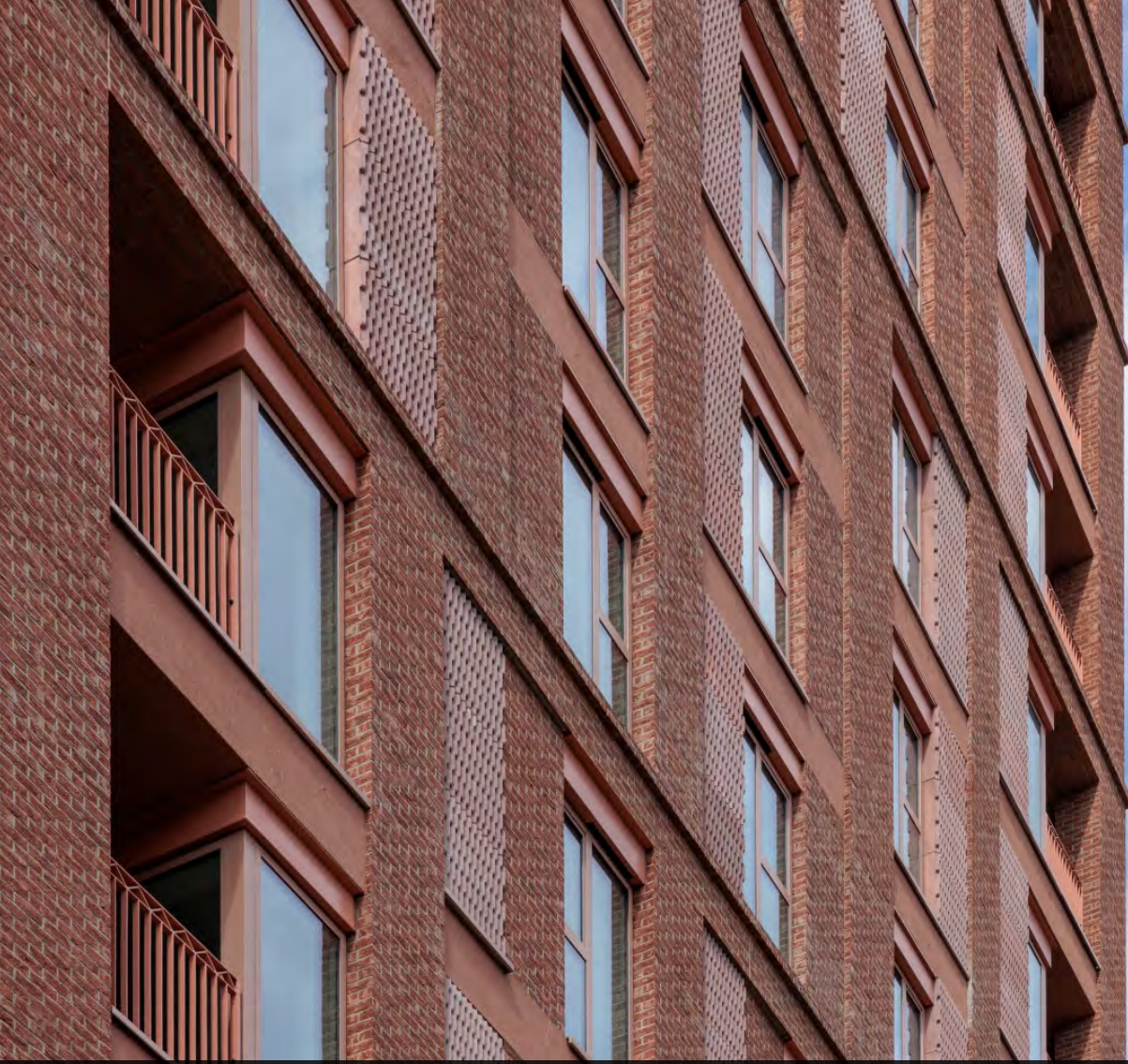




## Welbourne

The Welbourne development is part of a large masterplan regeneration scheme, designed by Related Argent PLC, who worked alongside Haringey Council to bring 1,030 new homes to Tottenham Hale, London. The £500m masterplan development further provides the area with ample new opportunities in retail, hospitality and health care. Main contractors Galliford Try and United Living were awarded this huge bid, with the aim to create a 'heart' to Tottenham that would connect the community with new public spaces and improved rail and transport links.

Vobster Architectural worked alongside architects Pollard Thomas Edwards who designed The Welbourne development with great tonal depth, consulting with the design team to specify and supply three different red facing bricks that complement the cast stone selected. Welbourne sits on a prominent corner site opposite Tottenham Hale train station, situating it in a prime location for residents to access all London has to offer.



## Brighton Shelter Hall

Brighton Shelter Hall was part of the council's high-profile £19m plan to restore and regenerate the Brighton seafront. The space has been extended to allow for more social and commercial opportunities along the popular coastal walkway. The shelter now houses a flagship restaurant and retail facility in its sea front offerings.

A new sea wall protects the restored building and wooden kiosk, which has been on the seafront since the 1880s. After the building was found to have serious structural weaknesses in 2013, Brighton and Hove City Council commenced crucial conversations on restoration and the opportunity for wider phases of regeneration for the famous seafront.

Vobster Architectural restored the cast stone details, such as the bastion, band course around the shelter and intricate Neptune heads, which form an iconic feature across the archways on West Street Shelter Hall's balconies and further represent the seaside location.





## Ashraya

Ashraya is an innovative and highly sustainable house tucked away in the hills of rural Hertfordshire. Set in the countryside and surrounded by nature, this family home was designed by architects Kirkland Fraser Moor and managed by Husker Limited.

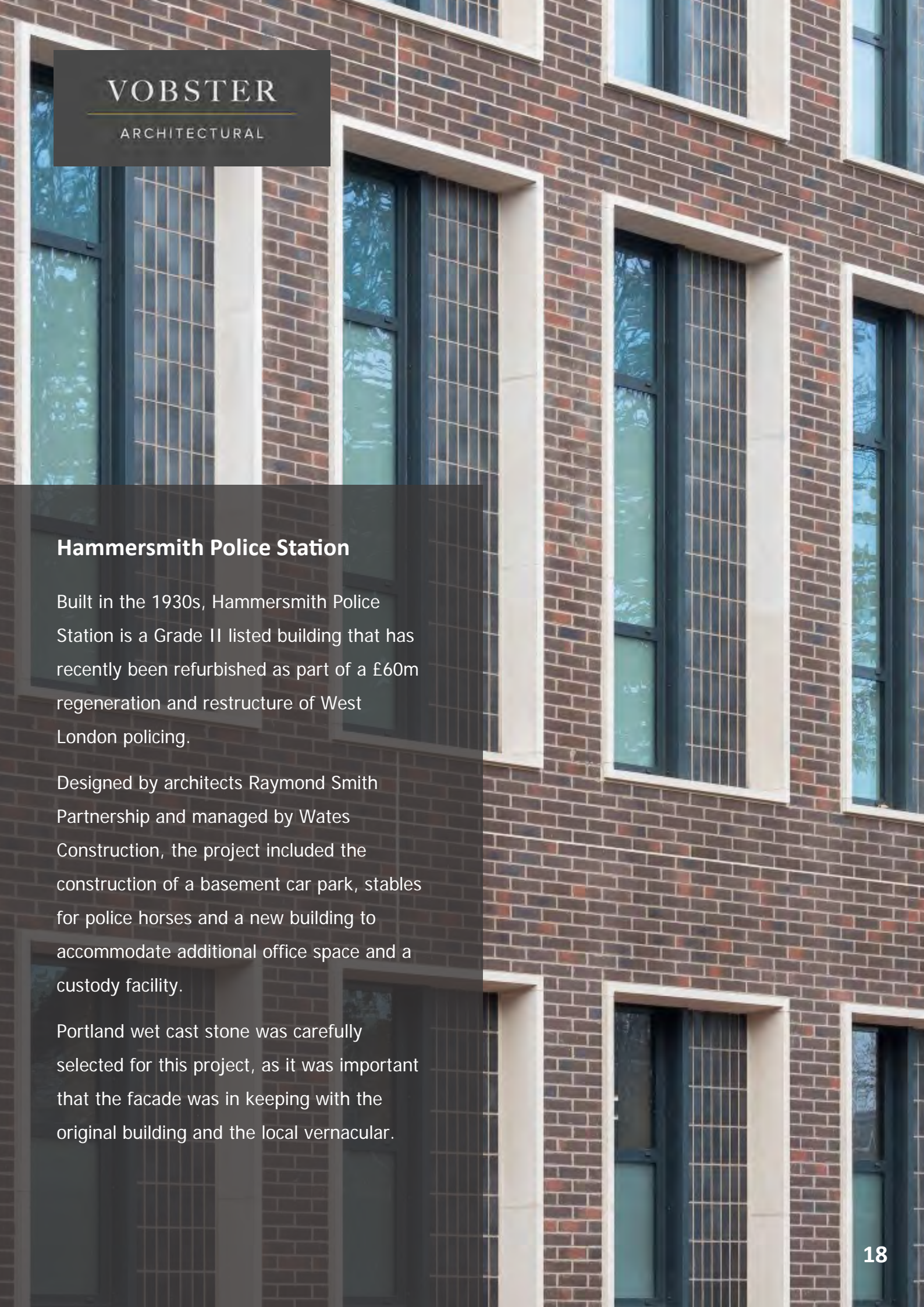
Located in The Chilterns Area of Outstanding Natural Beauty (AONB), the house was considerably constructed to be aesthetically pleasing, whilst being minimally visible from the road and neighbouring properties. The home is nestled low into the ground and is sheltered by a grass covered arch, allowing the building to blend seamlessly and respectfully into its surroundings.

The use of cast stone allowed for a quick installation time on site due to all of the pieces being precast at the Vobster Architectural factory.









VOBSTER

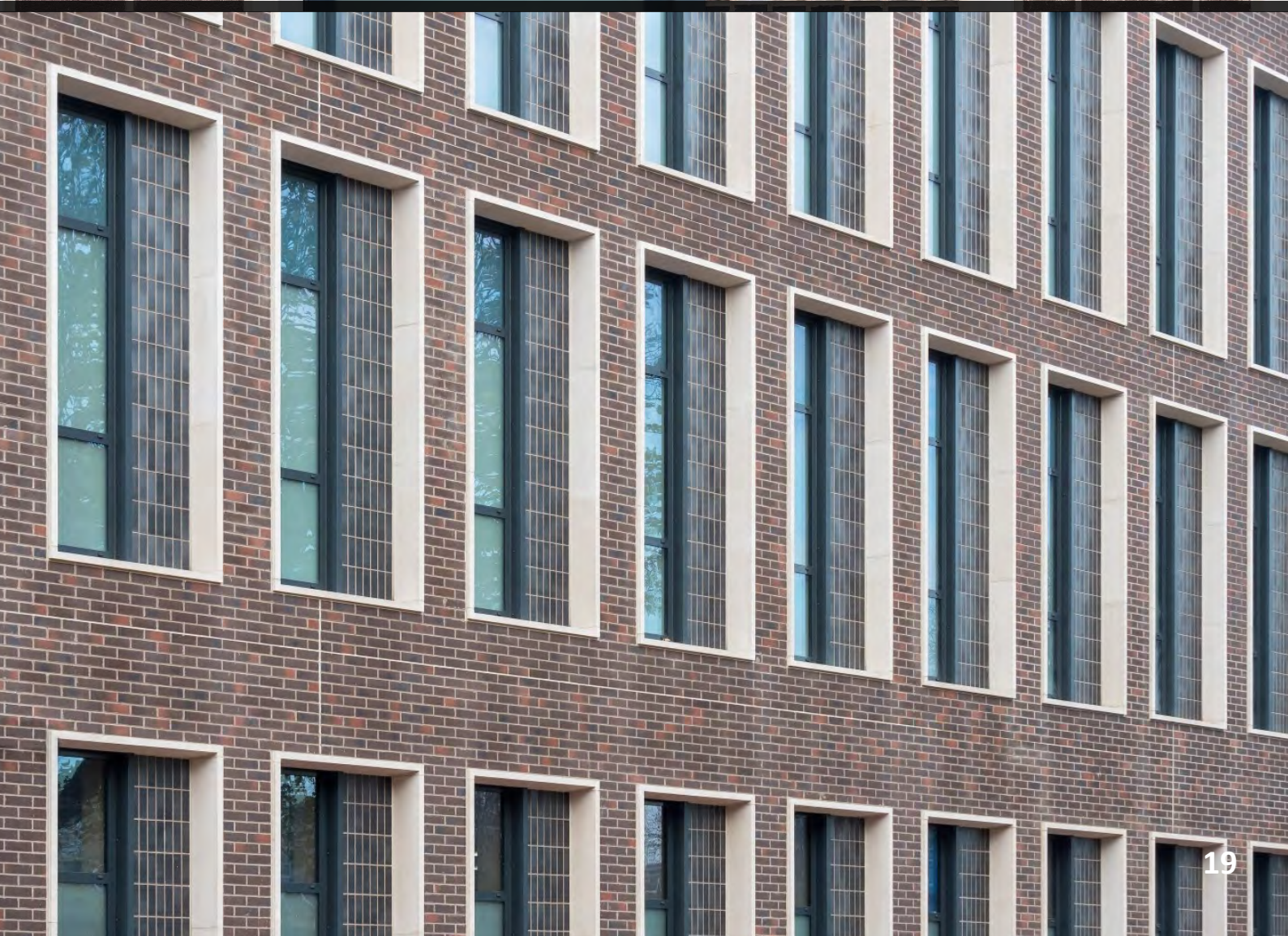
ARCHITECTURAL

## Hammersmith Police Station

Built in the 1930s, Hammersmith Police Station is a Grade II listed building that has recently been refurbished as part of a £60m regeneration and restructure of West London policing.

Designed by architects Raymond Smith Partnership and managed by Wates Construction, the project included the construction of a basement car park, stables for police horses and a new building to accommodate additional office space and a custody facility.

Portland wet cast stone was carefully selected for this project, as it was important that the facade was in keeping with the original building and the local vernacular.



## Pembroke College

Mill Lane is the first £10.3 million phase of Pembroke College's impressive £75 million masterplan to expand and renovate their existing library space, with phase two expected to complete in 2024.

Haworth Tompkins Architects were chosen for their considerate and purposeful designs, with main contractors Cocksedge Building Contractors managing the development of the Mill Lane site with the aim to deliver a modern 'retreat space' for entertainment, education and social purposes.

Vobster Architectural were selected to supply wet cast Bath stone, for window surrounds, band courses and landscaping features. The longevity of the material respects the history of the site and supports the aim to develop a long-standing enhancement to the college space.




VOBSTER

ARCHITECTURAL

Quebec Way

Glass Reinforced Concrete (GRC).





VOBSTER

ARCHITECTURAL

Newbury Works  
Coleford  
Somerset  
BA3 5RX

T. +44 (0)1373 812441  
E. [sales@vobsterarchitectural.co.uk](mailto:sales@vobsterarchitectural.co.uk)

[www.vobsterarchitectural.co.uk](http://www.vobsterarchitectural.co.uk)